

ESTING-(Fie Pvt Ltd)-[TRIAL 18] - [Results]

# RESULT

Certificate No. :TRIAL 18

## SELECTED INDENTATION



Tested for  
Fie Pvt Ltd  
Plot No. 68  
YADRAV-4

Identif  
SP01

Batch  
First

Load  
3000 kgf

Limits  
Maximum  
Minimum

260 HB  
230 HB

Mean Diameter  
3.98 mm

Status w.r.t. Limits Good

Readings Taken 130



GROUP

Over **60** years of  
consistent excellence

# Fully Automatic Computerized Brinell Hardness Testing Machine

Model : B 3000-PCFA



Wide Testing Range from  
Soft metal to medium hardness Steel.



High Accuracy & Repeatability  
of Measurement at all loads



Fully automatic machine for  
Production testing



## Features :

- Fully automatic machine for production testing.
- Fully computerized (PC based) Brinell hardness tester.
- Direct and accurate measurement of Brinell hardness number using 'State of the Art' image processing technology.
- Wide testing range : From soft metal such as lead up to hardest, like tempered steel.
- High accuracy and repeatability of measurement at all loads.
- Advanced Window based software :

## Latest GUI features :

- Latest GUI features with user friendly software.
- Online indentation setting & focussing on PC monitor.
- Advance image processing : algorithms implemented for precise calculation of hardness numbers with various options to cover all ranges of specimen.
- Batch file processing : Option for data storage & reports generation.
- Statistical Evaluation : Software for calculating standard deviation, mean, median, histogram frequency distribution graph, Variation graph etc.
- Calibration mode facility.
- Extensibility for future advanced image processing analysis requirements.
- "Auto measurement start" from machine.

## Application :

'FIE' Computerized Brinell Hardness Tester, Model:B3000-PC-FA is fabricated from steel plates and is designed for precise loading system. It is fully automatic machine for production testing.

Ones the job is placed on testing table and press "Cycle start" button the job is raised and brought in contact with clamping device.

Then loading operation starts. After preset dwelling timer, unloading operation starts. As soon as load is fully removed, the indenter is swivelled and the image is digitalized using a CCD camera fitted on machine and captured by the PC.

The diameter of indentation is measured by PC and the Brinell hardness is displayed on monitor with help of "state of the art" technology software. The job is lowered down and here the auto cycle is over.

Operationally the machine can be operated after lapse of interval without operation of push button, so that operator has only to do loading and unloading of job on machine.

This tester is designed for measuring hardness of metallic parts with wide testing range from soft to hard and its accurate results are widely acclaimed.

This tester confirms to IS:1500-2.

## Scope of Supply :

- Basic machine with CCD camera, optics with illumination system and connecting cable.
- USB device for Video.
- PC and Windows operating system is to be procured by customer.

## Technical Specifications :

Test Loads	kgf	250 to 3000 in stages of 250 kgf.
Magnification of objectives	-	4 X
Maximum Test Height	mm	380
Scale least count	mm	0.01
Throat Depth	mm	200
Weight (Approx.)	mm	450
Power Supply	V/Cy/Ph	415/50/3
Measurement Range	mm	1-6



## Standard Accessories :

Testing Table 200mm dia.	1 No.
Testing Table 70mm dia. with 'V groove for round jobs 10 to 80mm dia.	1 No.
Ball holder 5mm	1 No.
Ball holder 10mm	1 No.
Test Block HB-5/750	1 No.
Test Block HB-10/3000	1 No.
Allen Spanner	4 Nos.
Telescopic cover for elevating screw protection.	1 Set
Electric Cord	1 No.
USB device for Video	1 No.
Instruction Manual	1 Book

\* PC & Printer is not in our standard scope of supply.



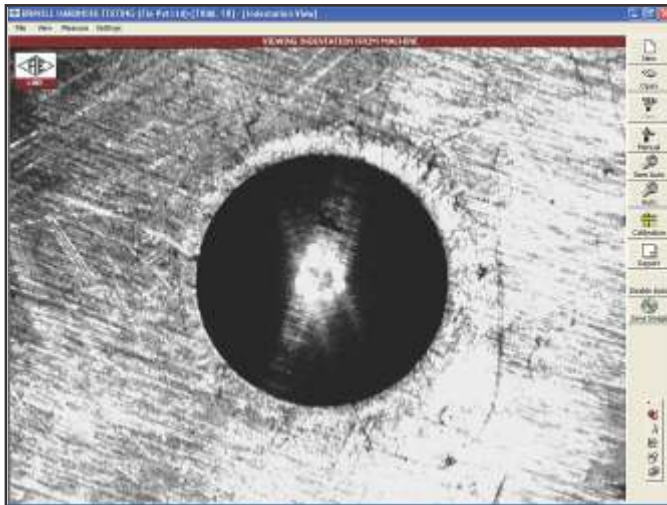
Customized Brinell Hardness Testers



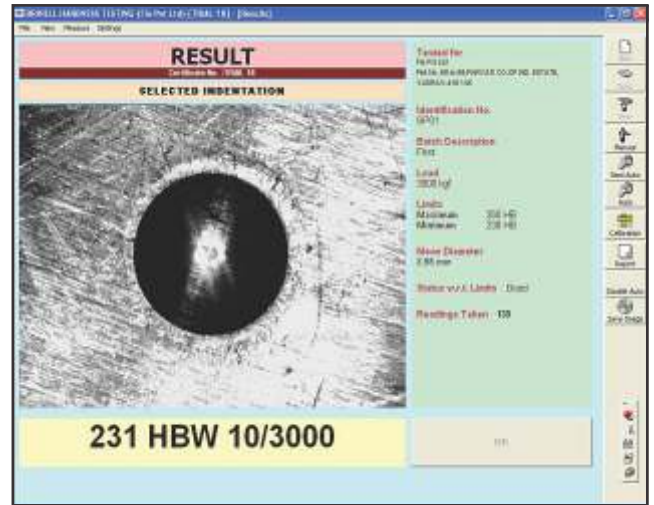
Over **60** years of consistent excellence

# Fully Automatic Computerized Brinell Hardness Testing Machine

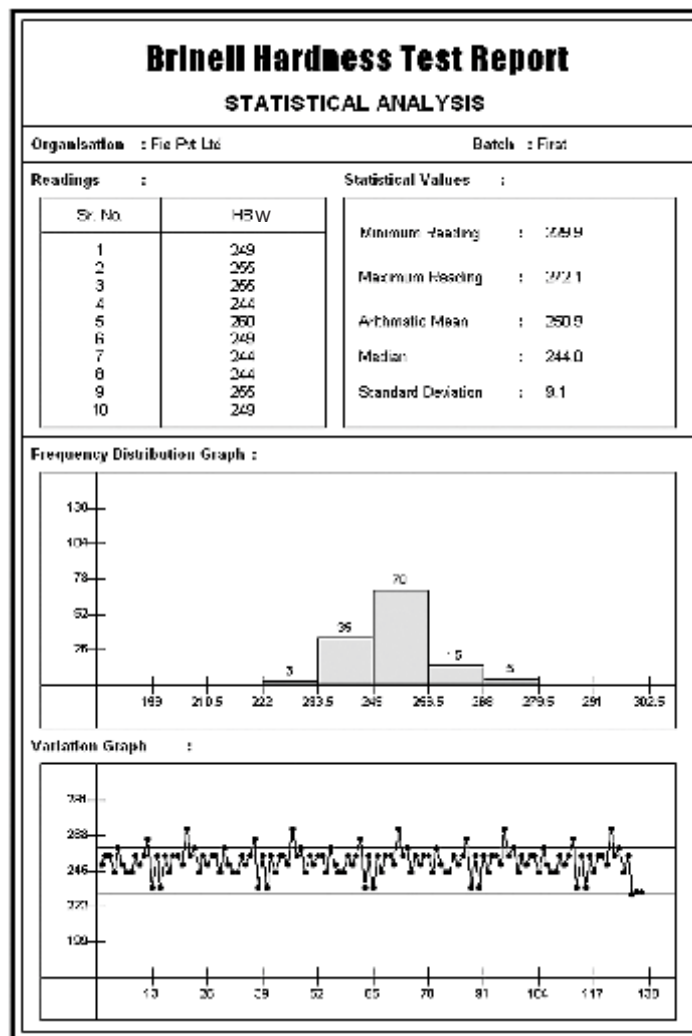
Model : B 3000-PCFA



Indentation View



Result View



Statistics



ESTING-(Fie Pvt Ltd)-[TRIAL 18]-[Results]

Settings

**RESULT**

Certificate No. :TRIAL 18

**SELECTED INDENTATION**

**Tested for**

Fie Pvt Ltd

Plot No. 68 to 89,PARVATI CO-OP IND. ESTATE,  
YADRAV-416 145

**Identification No.**  
SP01

**Batch Description**  
First

**Load**  
3000 kgf

**Limits**  
Maximum  
Minimum

260 HB  
230 HB

**Mean Diameter**  
3.98 mm

Status w.r.t. Limits

# Fully Automatic Computerized Brinell Hardness Testing Machine

Model : B 3000-PCFA



Over **60** years of  
consistent excellence

Manufactured By :

**Fuel Instruments & Engineers Pvt. Ltd.**

Plot No. 68 & 89, Parvati Co-op Industrial Estate, YADRAV-416 145 (Ichalkaranji),  
Tal : Shirol, Dist : Kolhapur, Maharashtra State, INDIA.

**Tel** : +91 2322 252137, **Cell** : +91 98223 94981, **E-mail** : mrk@fietest.com

**Web** : www.fiegroup.in, www.fietest.com, www.fuelinstrument.com